

RESOLUTION NO. 20-2015

A RESOLUTION OF THE CITY COUNCIL OF THE CITY OF MESQUITE, TEXAS, APPROVING LAND USE ASSUMPTIONS AND A CAPITAL IMPROVEMENTS PLAN PERTAINING TO A PROPOSED IMPACT FEE PROGRAM FOR WATER AND WASTEWATER FACILITIES WITHIN THE CITY AND THE EXTRATERRITORIAL JURISDICTION.

WHEREAS, on April 20, 2015, the City Council conducted a public hearing for the purpose of receiving public input on land use assumptions and a capital improvements plan (CIP) that are necessary to establish a proposed impact fee program for water and wastewater facilities within the City and the extraterritorial jurisdiction; and

WHEREAS, the City's consultant presented a summary of its analysis for projected growth, new demand on water and wastewater facilities, and a CIP to address that demand; and

WHEREAS, it is necessary to approve these assumptions and the CIP before proceeding to consideration of the actual impact fees.

NOW, THEREFORE, BE IT RESOLVED BY THE CITY COUNCIL OF THE CITY OF MESQUITE, TEXAS:

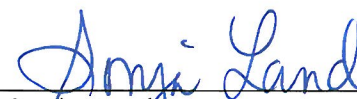
SECTION 1. That the City Council approves the land use assumptions and a capital improvements plan for a proposed water and wastewater impact fee program within the City and the extraterritorial jurisdiction as presented in Exhibit "A," attached hereto, which updates the data set forth and more fully explained in the "Water, Wastewater and Roadway 2015 Impact Fee Study Draft" dated January 28, 2015, on file in the City Secretary's Office.

DULY RESOLVED by the City Council of the City of Mesquite, Texas, on the 4th day of May, 2015.



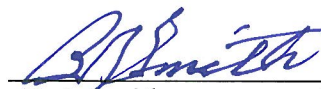
John Monaco
Mayor

ATTEST:



Sonja Land
City Secretary

APPROVED:



B. J. Smith
City Attorney

MESQUITE

T E X A S

Real. Texas. Flavor.

**Mesquite Impact Fees -
Public Hearing Presenting Revised
Land Use Assumptions and Capital
Improvements Plans for Water and
Wastewater Facilities**

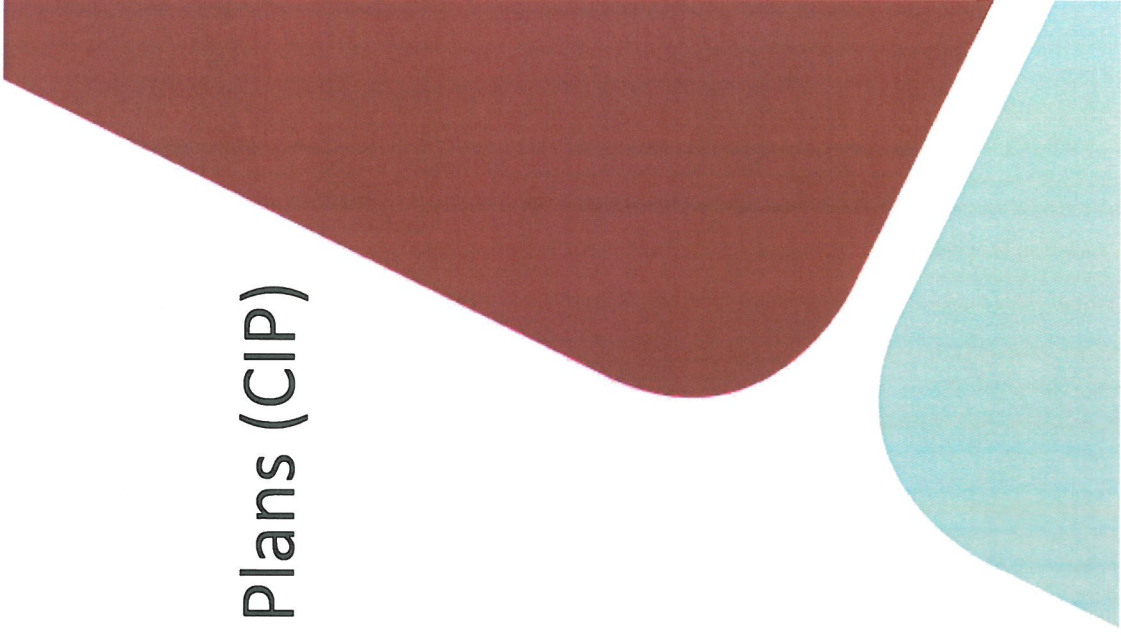
April 20, 2015

Kimley»»Horn

Impact Fee Components

- Service Areas
- Land Use Assumptions
- Impact Fee Capital Improvement Plans (CIP)

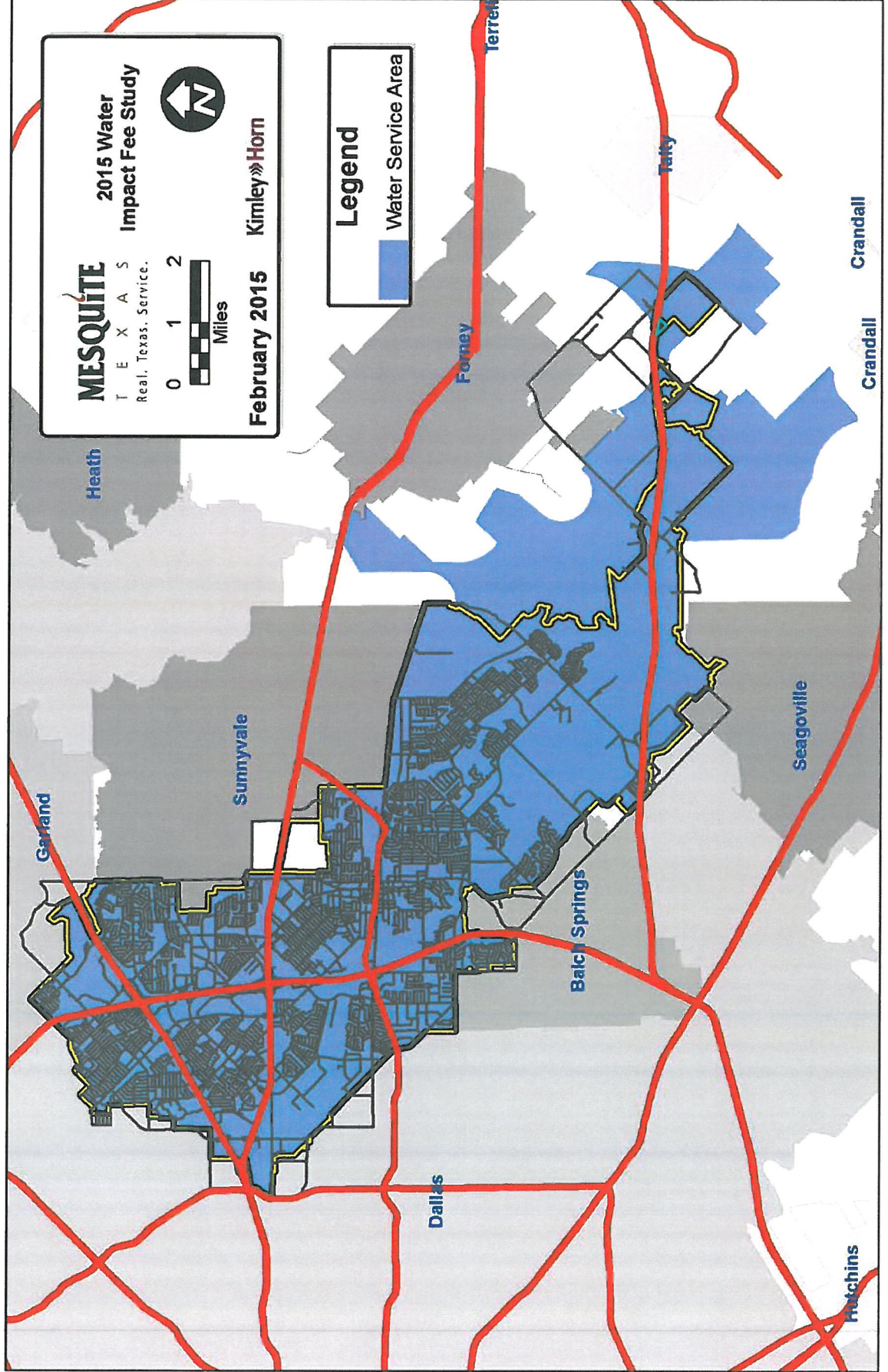
Kimley»Horn



Impact Fee Components Water Service Area

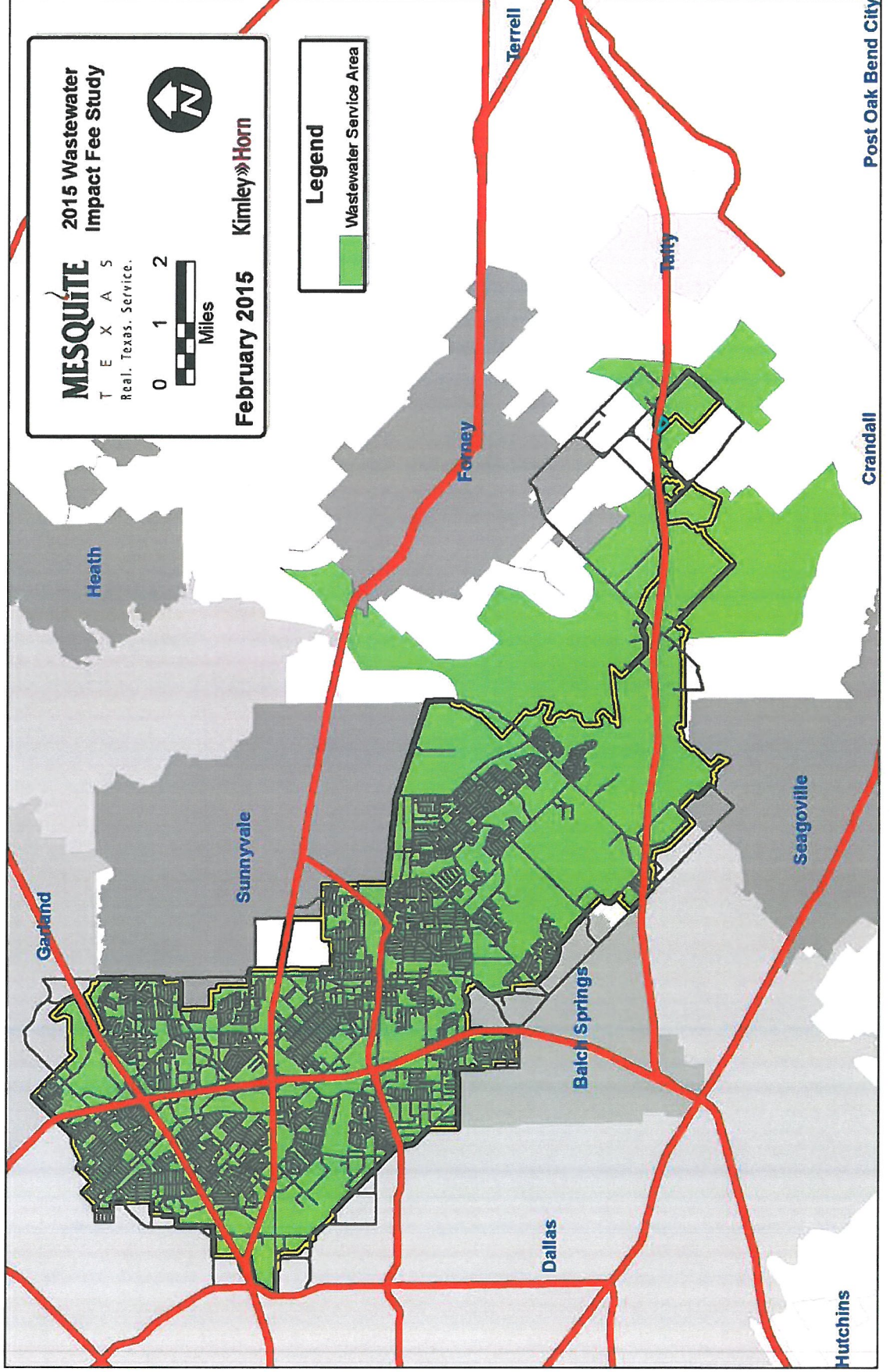
MESQUITE

T E X A S
Real. Texas. Service.



Impact Fee Components Wastewater Service Area

MESQUITE
T E X A S
Real. Texas. Service.



Impact Fee Components Land Use Assumptions

- Land Use Assumptions
 - Establishes Infrastructure Demands and Master Plans
- Population and Employment Projections
- Consistent with Mesquite's Future Land Use Plan
- **10-Year Growth**
- Different for Water, Wastewater, and Roadway due to various Service Areas

Impact Fee Components Land Use Assumptions

- Water

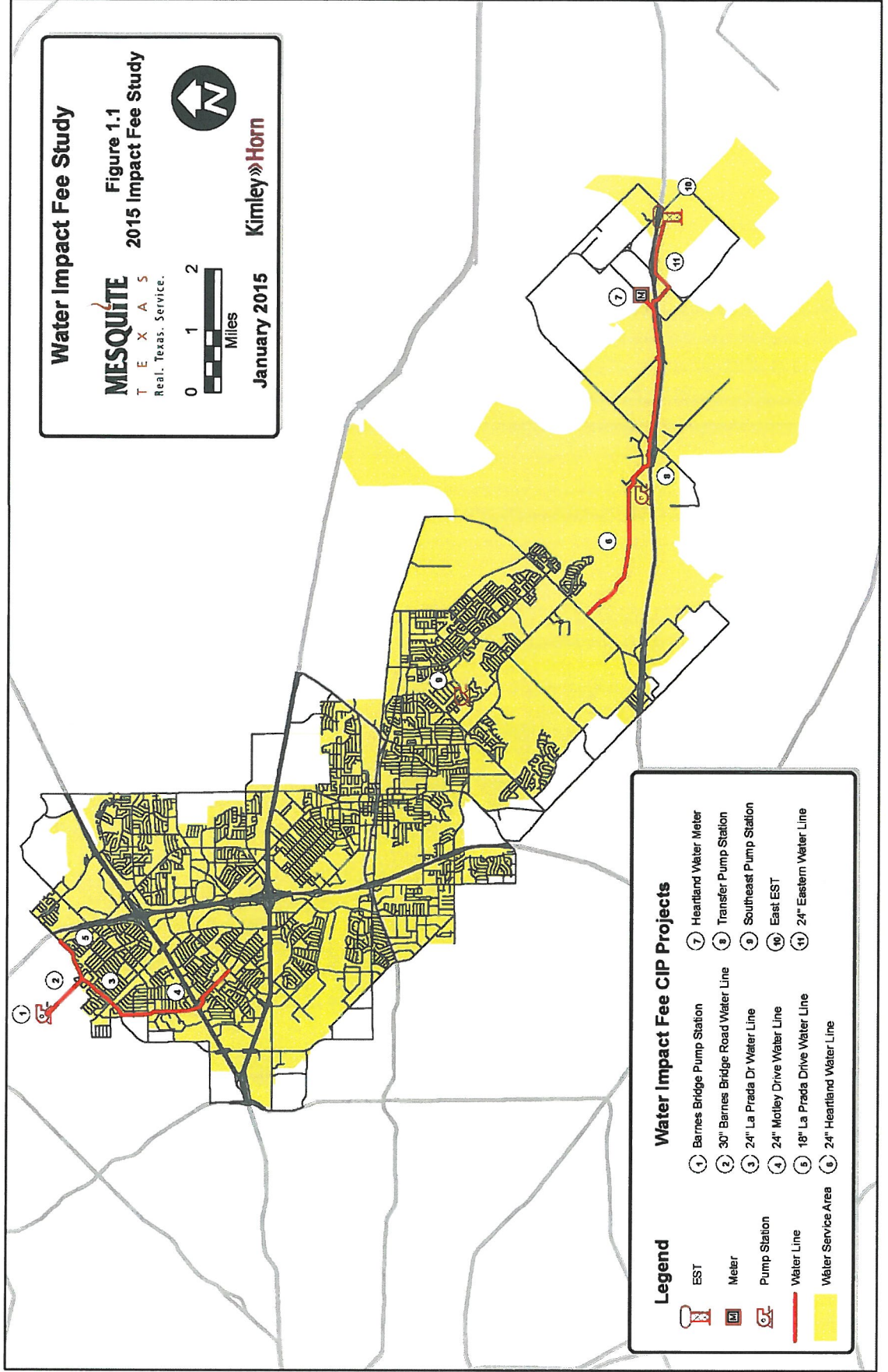
Service Area (Pressure Plane)	Dwelling Units		Basic (ft ²)	Service (ft ²)	Retail (ft ²)
	Single Family	Multi Family			
1 (North)	30	900	800,000	180,000	182,000
2 (South)	2,810	40	400,000	120,000	200,000
3 (ETJ)	400	250	0	150,000	150,000

Impact Fee Components Land Use Assumptions

- Wastewater

Service Area (Basins)	Dwelling Units		Basic (ft ²)	Service (ft ²)	Retail (ft ²)
	Single Family	Multi Family			
1 (M. Creek)	2,655	900	900,000	175,000	252,000
2	60	40	100,000	25,000	250,000
3 (Tripp Rd)	75	0	0	25,000	60,000
4 (ETJ)	400	250	0	150,000	150,000
5	50	0	0	75,000	20,000

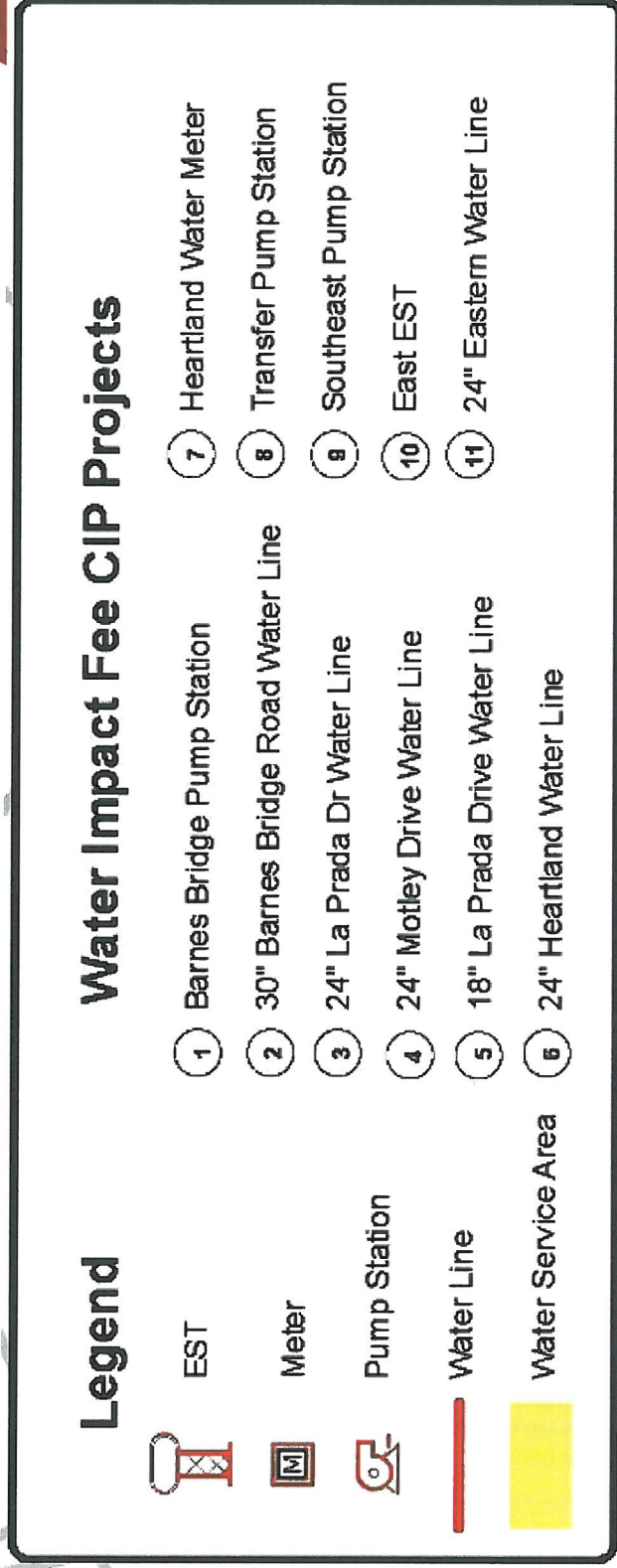
Impact Fee Components Water Impact Fee CIP



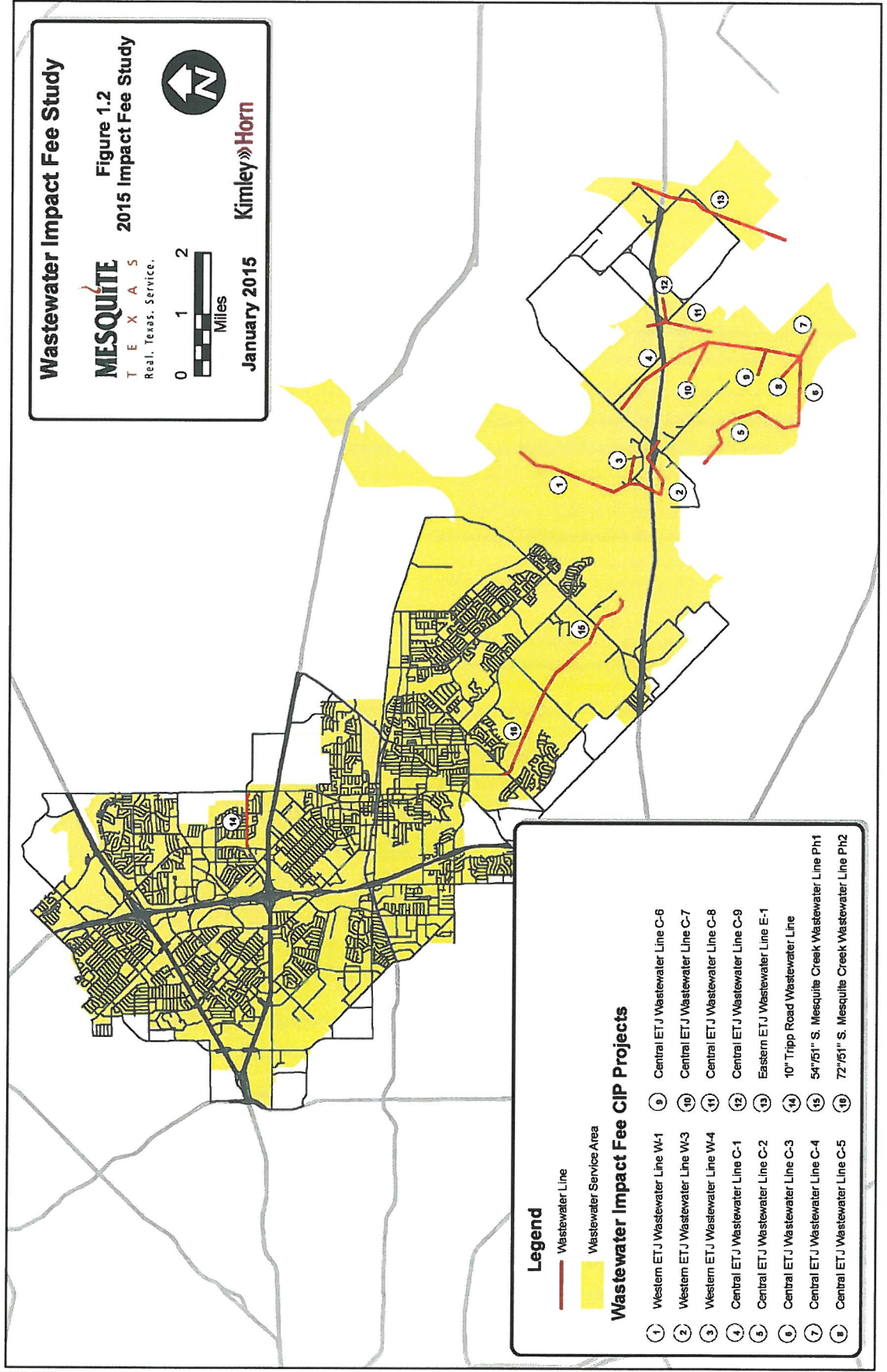
Impact Fee Components

Water Impact Fee CIP

- Total Water Impact Fee CIP - \$51,429,291
- Max. Recoverable - \$ 7,366,805





Impact Fee Components Wastewater Impact Fee CIP



Impact Fee Components Water Impact Fee CIP

- Total Water Impact Fee CIP - \$20,172,139
- Max. Recoverable - \$ 4,303,893

Legend	
	Wastewater Line
	Wastewater Service Area
Wastewater Impact Fee CIP Projects	
①	Western ETJ Wastewater Line W-1
②	Western ETJ Wastewater Line W-3
③	Western ETJ Wastewater Line W-4
④	Central ETJ Wastewater Line C-1
⑤	Central ETJ Wastewater Line C-2
⑥	Central ETJ Wastewater Line C-3
⑦	Central ETJ Wastewater Line C-4
⑧	Central ETJ Wastewater Line C-5
⑨	Central ETJ Wastewater Line C-6
⑩	Central ETJ Wastewater Line C-7
⑪	Central ETJ Wastewater Line C-8
⑫	Central ETJ Wastewater Line C-9
⑬	Eastern ETJ Wastewater Line E-1
⑭	10" Tripp Road Wastewater Line
⑮	54"/51" S. Mesquite Creek Wastewater Line Ph1
⑯	72"/51" S. Mesquite Creek Wastewater Line Ph2