

RESOLUTION NO. 22-83

A RESOLUTION OF THE CITY COUNCIL OF THE CITY OF MESQUITE, TEXAS, ESTABLISHING A CITYWIDE PLANNING COMMITTEE AND PROVIDING AN EFFECTIVE DATE THEREOF.

WHEREAS, the rapid growth experienced by the City of Mesquite is expected to continue in the future; and

WHEREAS, substantial portions of the City's land area are currently undeveloped; and

WHEREAS, the foregoing factors set out the responsibility and present the opportunity to plan for the quality of future development in the City; and

WHEREAS, the Mesquite Development Guide prepared in 1977 is now six years old; and

WHEREAS, the citizens of Mesquite are best qualified to evaluate the policies which guide the future development of the City;

NOW, THEREFORE, BE IT RESOLVED BY THE CITY COUNCIL OF THE CITY OF MESQUITE, TEXAS:

Section 1. That a citywide planning committee be established, representing a cross-section of those directly and indirectly concerned with the future development of Mesquite, with membership as outlined in Exhibit A attached hereto, to participate in a planning workshop process in cooperation with the Planning Division to study and evaluate future growth and development and to propose policies to encourage the desired type and quality development.

Section 2. That this resolution take effect immediately upon passage as the law in such cases provides.

DULY RESOLVED by the City Council of the City of Mesquite, Texas on the 6th day of June, A.D., 1983.

Brunhilde Nystrom
Brunhilde Nystrom
Mayor

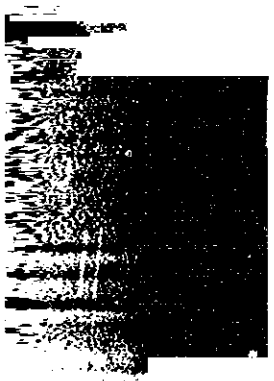
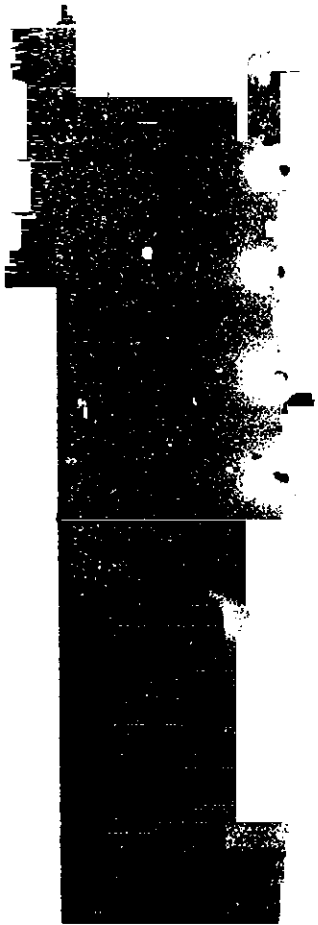
ATTEST:
Norma McGaughy
Norma McGaughy
City Secretary

00248

EXHIBIT A-1

COMMITTEE COMPOSITION

MESQUITE CITY COUNCIL	4
CITY COMMISSIONS & BOARDS	
Planning & Zoning Commission	4
Parks Board	1
Environmental Improvement Committee	1
CITY OFFICIALS	
City Manager	1
Director of Parks & Recreation	1
Director of Community Development	1
MESQUITE INDEPENDENT SCHOOL DISTRICT	2
CHAMBER OF COMMERCE	3
DEVELOPMENT INTERESTS	
Developers, Builders, Vacant Land Owners, etc.	10
CITIZENS AT LARGE (See map - Exhibit A-2)	
SubArea 1	3
SubArea 2	3
SubArea 3	3
SubArea 4	3
SubArea 5	3
SubArea 6	3
SubArea 7	1
SubArea 8	1
<hr/>	
TOTAL MEMBERSHIP	48



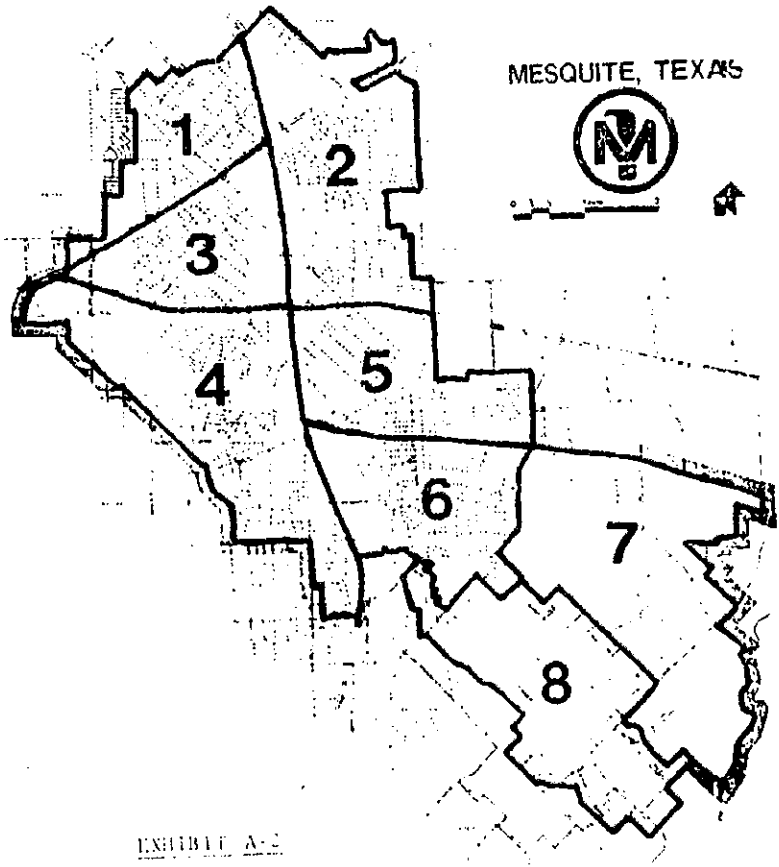


EXHIBIT A-2

PROPOSED SUB-AREA REPRESENTATION

<u>Area</u>	<u>Estimated Population</u>	<u>Number of Representatives</u>
1	13,770	3
2	10,500	3
3	15,395	3
4	12,533	3
5	12,810	3
6	11,214	3
7	245	1