

RESOLUTION NO. 42-64RESOLUTION OF THE CITY COUNCIL OF THE
CITY OF MESQUITE, TEXAS

WHEREAS, the City Council of the City of Mesquite passed Resolution 11-62 on April 16, 1962, adopting certain requirements for the construction of drainage facilities and pavement of public streets, highways, alleys and other public places; and

WHEREAS, it is necessary to amend such specifications;

NOW, THEREFORE, BE IT RESOLVED BY THE CITY COUNCIL OF THE CITY OF MESQUITE, TEXAS:

SECTION 1. That the requirements for the construction of drainage facilities and pavement of public streets, highways, alleys and other public places adopted by Resolution 11-62 on April 16, 1962, and as heretofore amended by Resolution #24-62 adopted July 15, 1963, be, and the same are hereby amended by changing said requirements so as to hereafter read in accordance with the language contained in Appendix A attached hereto and made a part hereof for all purposes the same as if copied in full herein.

SECTION 2. That this Resolution shall take effect immediately from and after its passage.

DULY PASSED by the City Council of the City of Mesquite, Texas, on the 21 day of December, 1964.



Mayor

DULY RECORDED:



City Secretary

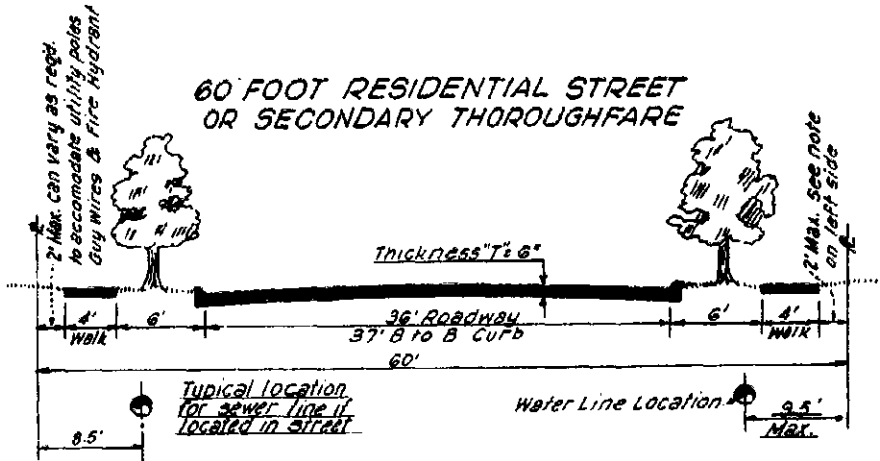
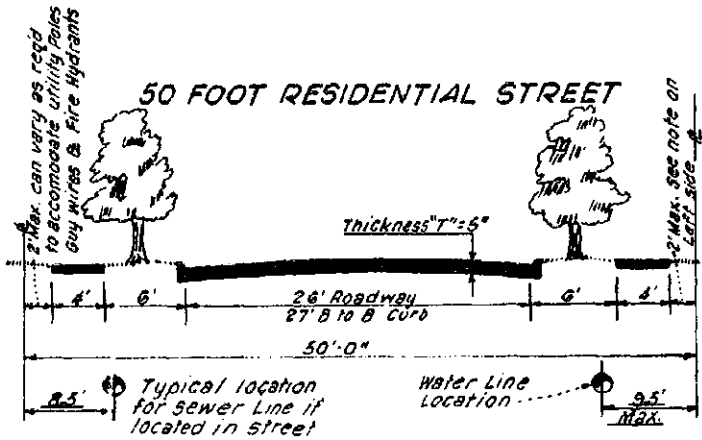
APPROVED AS TO FORM:



Attorney

APPENDIX A

PAVING & DRAINAGE
DRAWING NO. 1

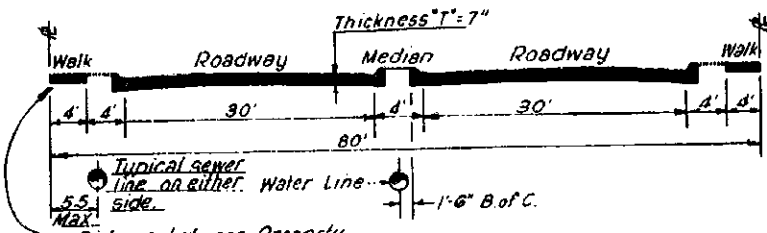


CITY OF MESQUITE
STANDARDS FOR CONSTRUCTION
TYPICAL STREET CROSS-SECTIONS

Revised: October 1964

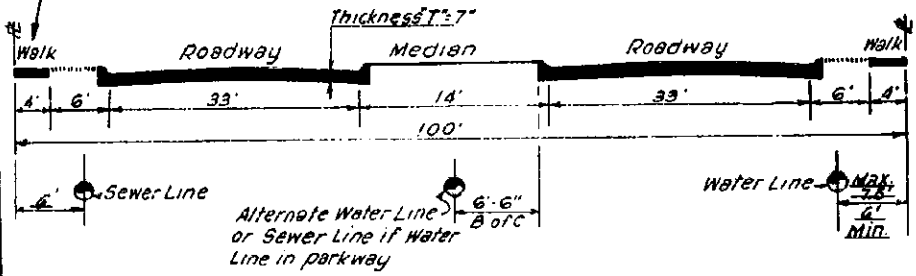
PAVING & DRAINAGE
DRAWING NO. 2

80 FOOT THROUGHFARE

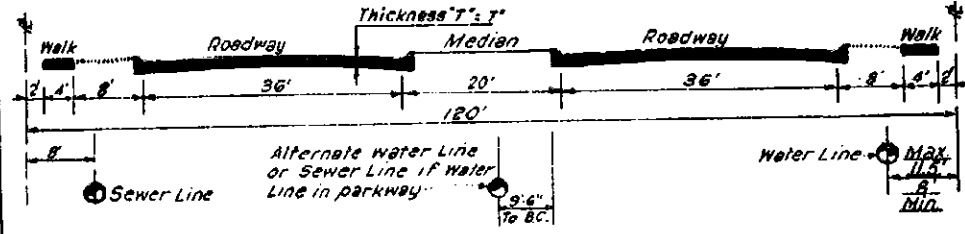


Distance between Property Line & Sidewalk to be max. of 2' but can vary as required to accommodate poles, etc.

100 FOOT THROUGHFARE



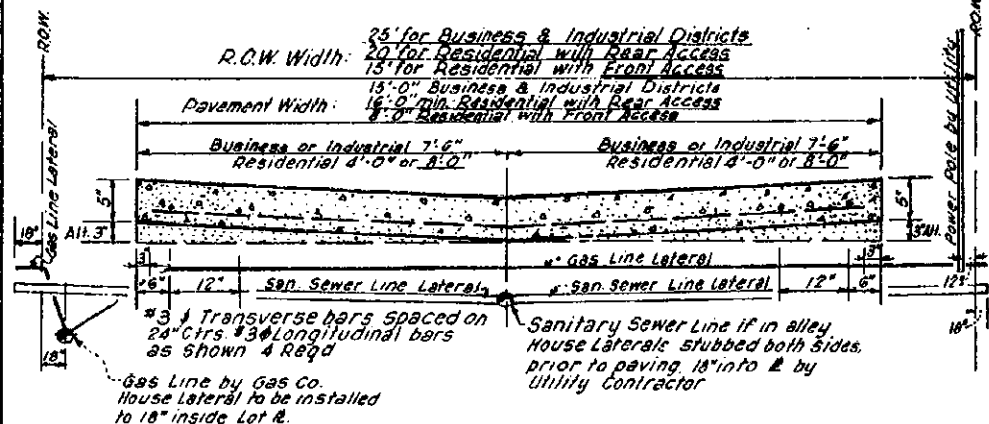
120 FOOT THROUGHFARE



CITY OF MESQUITE
STANDARDS FOR CONSTRUCTION
TYP. STREET CROSS-SECTIONS

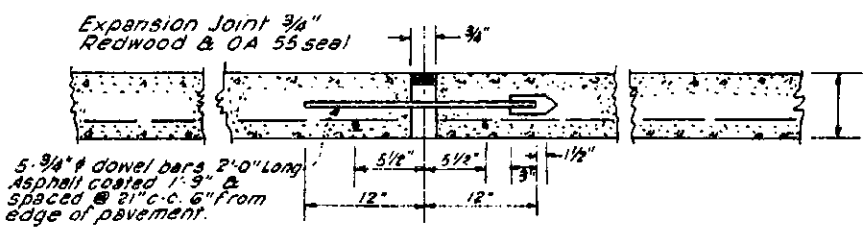
Revised: October 1964

**PAVING & DRAINAGE
DRAWING NO. 6**



NOTE: Alley Pavement to be 5" thick reinforced concrete, 5 sack cement per cubic yard contraction joint spacing not to exceed 20'-0"

ALLEY PAVING SECTION



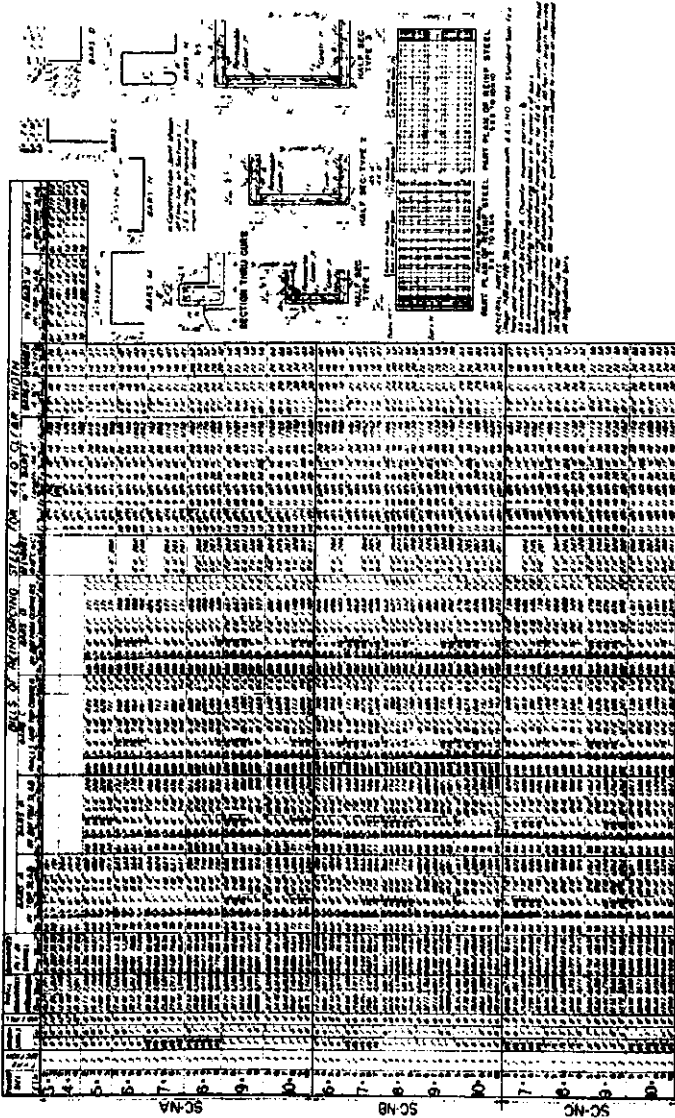
Sleeve for dowels shall have an inside diameter of 1/16" greater than that of dowel & be of quality & design as to provide free movement of the dowel bar

TRANSVERSE EXPANSION JOINT
 Provide expansion joint at each end of alley approach and at maximum of 600' spacing

**CITY OF MESQUITE
STANDARDS FOR CONSTRUCTION
ALLEY PAVING**

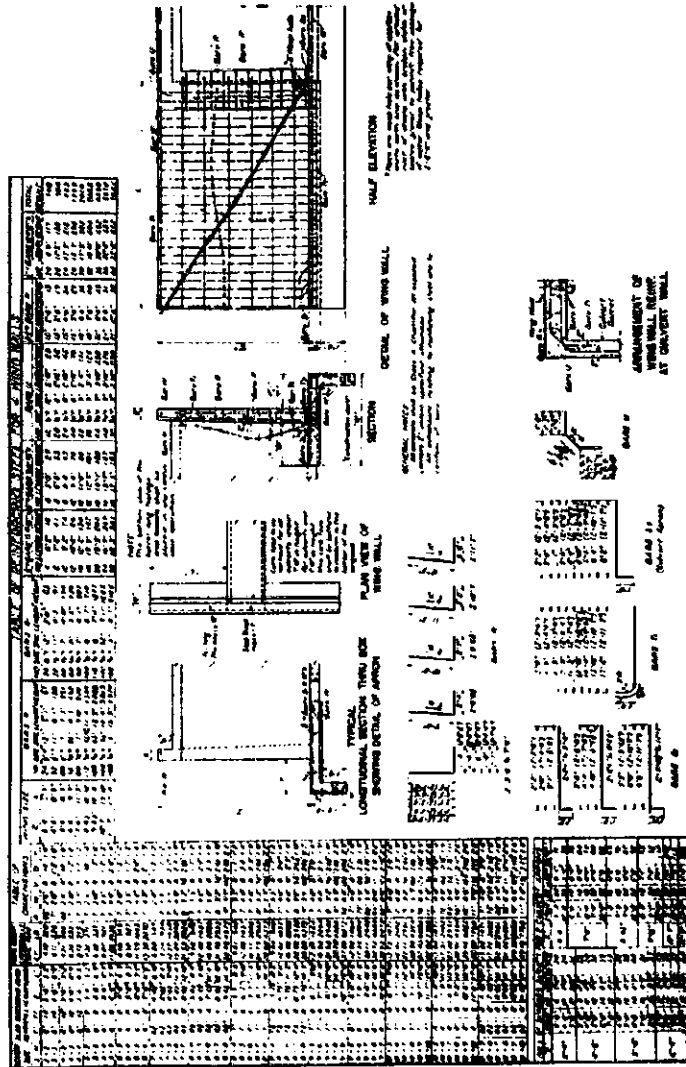
Revised - October 1964

PAVING & DRAINAGE
DRAWING NO. 14



CITY OF MESQUITE
STANDARDS FOR CONSTRUCTION
SINGLE BOX CULVERT

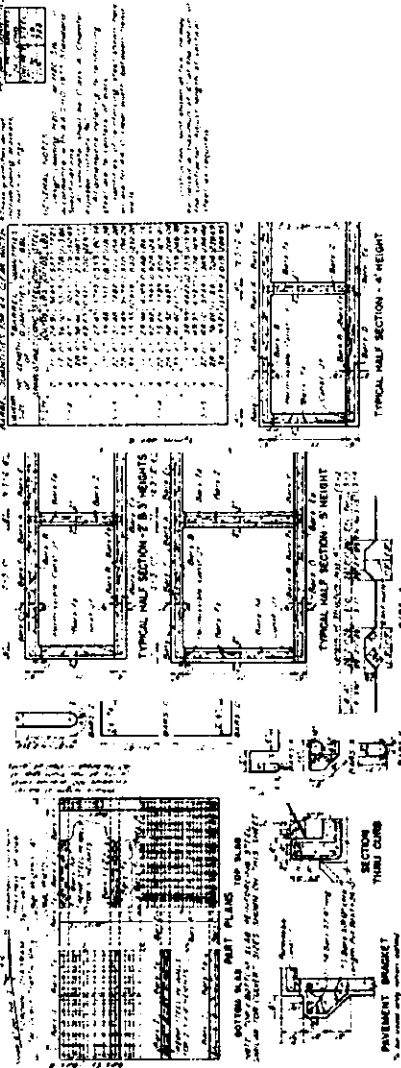
PAVING & DRAINAGE
DRAWING NO. 16



CITY OF MESQUITE
STANDARDS FOR CONSTRUCTION
PARALLEL WING WALLS FOR
SINGLE BOX CULVERT

PAVING & DRAINAGE
DRAWING NO. 17

NO.	DESCRIPTION	AMOUNT	UNIT	PRICE	TOTAL
1	PAVEMENT				
2	CONCRETE				
3	STEEL				
4	WOOD				
5	BRICK				
6	CEMENT				
7	SAND				
8	GRAVEL				
9	PIPE				
10	MANHOLE				
11	WALKWAY				
12	GRASS				
13	PAINT				
14	LABOR				
15	TRUCK				
16	WATER				
17	ELECTRICITY				
18	INSURANCE				
19	TAXES				
20	PROFIT				



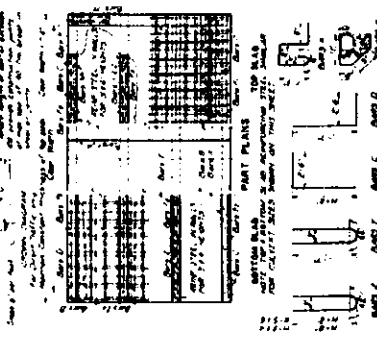
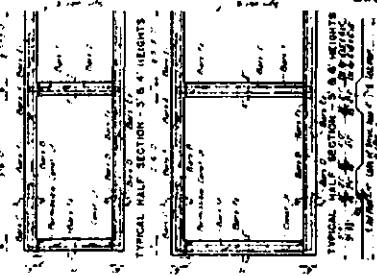
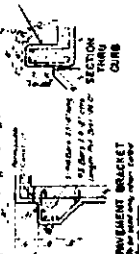
CITY OF MESQUITE
STANDARDS FOR CONSTRUCTION
5' SPAN MULTIPLE BOX CULVERT

PAVING & DRAINAGE
DRAWING NO. 18

STATION	ELEVATION	FINISH	PAVING	DRAINAGE	CURB	SIDEWALK	TOTAL	CROSS SECTION	
								PAVING	DRAINAGE
1+00	100.00	100.00	100.00	100.00	100.00	100.00	100.00	100.00	100.00
1+05	100.05	100.05	100.05	100.05	100.05	100.05	100.05	100.05	100.05
1+10	100.10	100.10	100.10	100.10	100.10	100.10	100.10	100.10	100.10
1+15	100.15	100.15	100.15	100.15	100.15	100.15	100.15	100.15	100.15
1+20	100.20	100.20	100.20	100.20	100.20	100.20	100.20	100.20	100.20
1+25	100.25	100.25	100.25	100.25	100.25	100.25	100.25	100.25	100.25
1+30	100.30	100.30	100.30	100.30	100.30	100.30	100.30	100.30	100.30
1+35	100.35	100.35	100.35	100.35	100.35	100.35	100.35	100.35	100.35
1+40	100.40	100.40	100.40	100.40	100.40	100.40	100.40	100.40	100.40
1+45	100.45	100.45	100.45	100.45	100.45	100.45	100.45	100.45	100.45
1+50	100.50	100.50	100.50	100.50	100.50	100.50	100.50	100.50	100.50
1+55	100.55	100.55	100.55	100.55	100.55	100.55	100.55	100.55	100.55
1+60	100.60	100.60	100.60	100.60	100.60	100.60	100.60	100.60	100.60
1+65	100.65	100.65	100.65	100.65	100.65	100.65	100.65	100.65	100.65
1+70	100.70	100.70	100.70	100.70	100.70	100.70	100.70	100.70	100.70
1+75	100.75	100.75	100.75	100.75	100.75	100.75	100.75	100.75	100.75
1+80	100.80	100.80	100.80	100.80	100.80	100.80	100.80	100.80	100.80
1+85	100.85	100.85	100.85	100.85	100.85	100.85	100.85	100.85	100.85
1+90	100.90	100.90	100.90	100.90	100.90	100.90	100.90	100.90	100.90
1+95	100.95	100.95	100.95	100.95	100.95	100.95	100.95	100.95	100.95
2+00	101.00	101.00	101.00	101.00	101.00	101.00	101.00	101.00	101.00

GENERAL NOTES:
1. ALL ELEVATIONS ARE IN FEET AND DECIMALS THEREOF.
2. THE FINISH GRADE IS TO BE AS SHOWN ON THIS DRAWING.
3. THE PAVING IS TO BE 4" THICK PORTLAND CEMENT CONCRETE.
4. THE DRAINAGE IS TO BE 4" THICK PORTLAND CEMENT CONCRETE.
5. THE CURB IS TO BE 4" THICK PORTLAND CEMENT CONCRETE.
6. THE SIDEWALK IS TO BE 4" THICK PORTLAND CEMENT CONCRETE.
7. THE TOTAL THICKNESS IS TO BE 4" THICK PORTLAND CEMENT CONCRETE.
8. THE TOTAL THICKNESS IS TO BE 4" THICK PORTLAND CEMENT CONCRETE.

STATION	ELEVATION	FINISH	PAVING	DRAINAGE	CURB	SIDEWALK	TOTAL
1+00	100.00	100.00	100.00	100.00	100.00	100.00	100.00
1+05	100.05	100.05	100.05	100.05	100.05	100.05	100.05
1+10	100.10	100.10	100.10	100.10	100.10	100.10	100.10
1+15	100.15	100.15	100.15	100.15	100.15	100.15	100.15
1+20	100.20	100.20	100.20	100.20	100.20	100.20	100.20
1+25	100.25	100.25	100.25	100.25	100.25	100.25	100.25
1+30	100.30	100.30	100.30	100.30	100.30	100.30	100.30
1+35	100.35	100.35	100.35	100.35	100.35	100.35	100.35
1+40	100.40	100.40	100.40	100.40	100.40	100.40	100.40
1+45	100.45	100.45	100.45	100.45	100.45	100.45	100.45
1+50	100.50	100.50	100.50	100.50	100.50	100.50	100.50
1+55	100.55	100.55	100.55	100.55	100.55	100.55	100.55
1+60	100.60	100.60	100.60	100.60	100.60	100.60	100.60
1+65	100.65	100.65	100.65	100.65	100.65	100.65	100.65
1+70	100.70	100.70	100.70	100.70	100.70	100.70	100.70
1+75	100.75	100.75	100.75	100.75	100.75	100.75	100.75
1+80	100.80	100.80	100.80	100.80	100.80	100.80	100.80
1+85	100.85	100.85	100.85	100.85	100.85	100.85	100.85
1+90	100.90	100.90	100.90	100.90	100.90	100.90	100.90
1+95	100.95	100.95	100.95	100.95	100.95	100.95	100.95
2+00	101.00	101.00	101.00	101.00	101.00	101.00	101.00



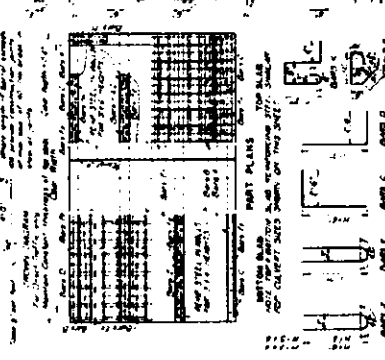
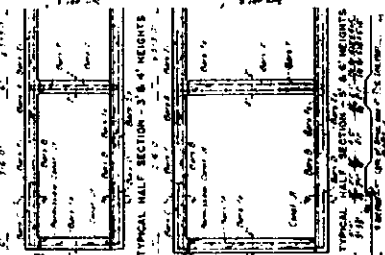
CITY OF MESQUITE
STANDARDS FOR CONSTRUCTION
6' SPAN MULTIPLE BOX CULVERT

PAVING & DRAINAGE
DRAWING NO. 18

NO.	SPAN	MATERIAL	THICKNESS		REMARKS
			IN.	FT.	
1	6'	CONCRETE	12"	0'	...
2	6'	CONCRETE	12"	0'	...
3	6'	CONCRETE	12"	0'	...
4	6'	CONCRETE	12"	0'	...
5	6'	CONCRETE	12"	0'	...
6	6'	CONCRETE	12"	0'	...
7	6'	CONCRETE	12"	0'	...
8	6'	CONCRETE	12"	0'	...
9	6'	CONCRETE	12"	0'	...
10	6'	CONCRETE	12"	0'	...
11	6'	CONCRETE	12"	0'	...
12	6'	CONCRETE	12"	0'	...
13	6'	CONCRETE	12"	0'	...
14	6'	CONCRETE	12"	0'	...
15	6'	CONCRETE	12"	0'	...
16	6'	CONCRETE	12"	0'	...
17	6'	CONCRETE	12"	0'	...
18	6'	CONCRETE	12"	0'	...
19	6'	CONCRETE	12"	0'	...
20	6'	CONCRETE	12"	0'	...
21	6'	CONCRETE	12"	0'	...
22	6'	CONCRETE	12"	0'	...
23	6'	CONCRETE	12"	0'	...
24	6'	CONCRETE	12"	0'	...
25	6'	CONCRETE	12"	0'	...
26	6'	CONCRETE	12"	0'	...
27	6'	CONCRETE	12"	0'	...
28	6'	CONCRETE	12"	0'	...
29	6'	CONCRETE	12"	0'	...
30	6'	CONCRETE	12"	0'	...
31	6'	CONCRETE	12"	0'	...
32	6'	CONCRETE	12"	0'	...
33	6'	CONCRETE	12"	0'	...
34	6'	CONCRETE	12"	0'	...
35	6'	CONCRETE	12"	0'	...
36	6'	CONCRETE	12"	0'	...
37	6'	CONCRETE	12"	0'	...
38	6'	CONCRETE	12"	0'	...
39	6'	CONCRETE	12"	0'	...
40	6'	CONCRETE	12"	0'	...
41	6'	CONCRETE	12"	0'	...
42	6'	CONCRETE	12"	0'	...
43	6'	CONCRETE	12"	0'	...
44	6'	CONCRETE	12"	0'	...
45	6'	CONCRETE	12"	0'	...
46	6'	CONCRETE	12"	0'	...
47	6'	CONCRETE	12"	0'	...
48	6'	CONCRETE	12"	0'	...
49	6'	CONCRETE	12"	0'	...
50	6'	CONCRETE	12"	0'	...

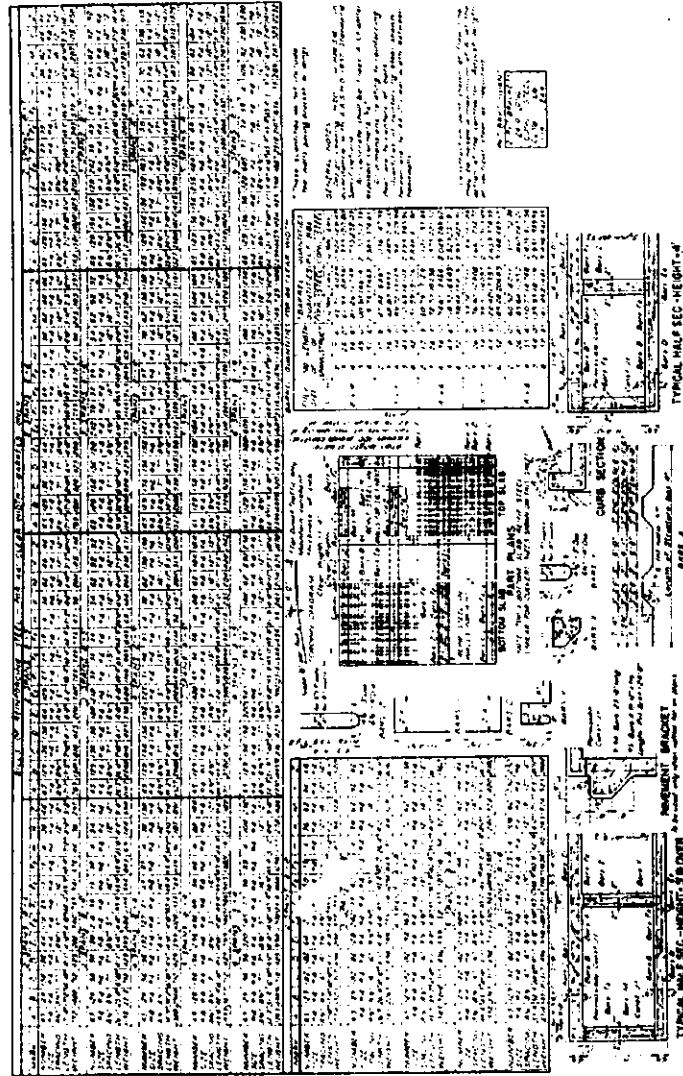
GENERAL NOTES:
1. ALL DIMENSIONS ARE TO FACE UNLESS OTHERWISE SPECIFIED.
2. ALL MATERIALS SHALL BE AS SPECIFIED IN THE SPECIFICATIONS.
3. THE CONTRACTOR SHALL BE RESPONSIBLE FOR OBTAINING ALL NECESSARY PERMITS.
4. THE CONTRACTOR SHALL MAINTAIN ACCESS TO ALL ADJACENT PROPERTIES AT ALL TIMES.
5. ALL WORK SHALL BE DONE IN ACCORDANCE WITH THE CITY OF MESQUITE STANDARDS FOR CONSTRUCTION.

NO.	SPAN	MATERIAL	THICKNESS	REMARKS
1	6'	CONCRETE	12"	...
2	6'	CONCRETE	12"	...
3	6'	CONCRETE	12"	...
4	6'	CONCRETE	12"	...
5	6'	CONCRETE	12"	...
6	6'	CONCRETE	12"	...
7	6'	CONCRETE	12"	...
8	6'	CONCRETE	12"	...
9	6'	CONCRETE	12"	...
10	6'	CONCRETE	12"	...
11	6'	CONCRETE	12"	...
12	6'	CONCRETE	12"	...
13	6'	CONCRETE	12"	...
14	6'	CONCRETE	12"	...
15	6'	CONCRETE	12"	...
16	6'	CONCRETE	12"	...
17	6'	CONCRETE	12"	...
18	6'	CONCRETE	12"	...
19	6'	CONCRETE	12"	...
20	6'	CONCRETE	12"	...
21	6'	CONCRETE	12"	...
22	6'	CONCRETE	12"	...
23	6'	CONCRETE	12"	...
24	6'	CONCRETE	12"	...
25	6'	CONCRETE	12"	...
26	6'	CONCRETE	12"	...
27	6'	CONCRETE	12"	...
28	6'	CONCRETE	12"	...
29	6'	CONCRETE	12"	...
30	6'	CONCRETE	12"	...
31	6'	CONCRETE	12"	...
32	6'	CONCRETE	12"	...
33	6'	CONCRETE	12"	...
34	6'	CONCRETE	12"	...
35	6'	CONCRETE	12"	...
36	6'	CONCRETE	12"	...
37	6'	CONCRETE	12"	...
38	6'	CONCRETE	12"	...
39	6'	CONCRETE	12"	...
40	6'	CONCRETE	12"	...
41	6'	CONCRETE	12"	...
42	6'	CONCRETE	12"	...
43	6'	CONCRETE	12"	...
44	6'	CONCRETE	12"	...
45	6'	CONCRETE	12"	...
46	6'	CONCRETE	12"	...
47	6'	CONCRETE	12"	...
48	6'	CONCRETE	12"	...
49	6'	CONCRETE	12"	...
50	6'	CONCRETE	12"	...



CITY OF MESQUITE
STANDARDS FOR CONSTRUCTION
6' SPAN MULTIPLE BOX CULVERT

PAVING & DRAINAGE
DRAWING NO. 19



CITY OF MESQUITE
STANDARDS FOR CONSTRUCTION
6' SPAN MULTIPLE BOX CULVERT