

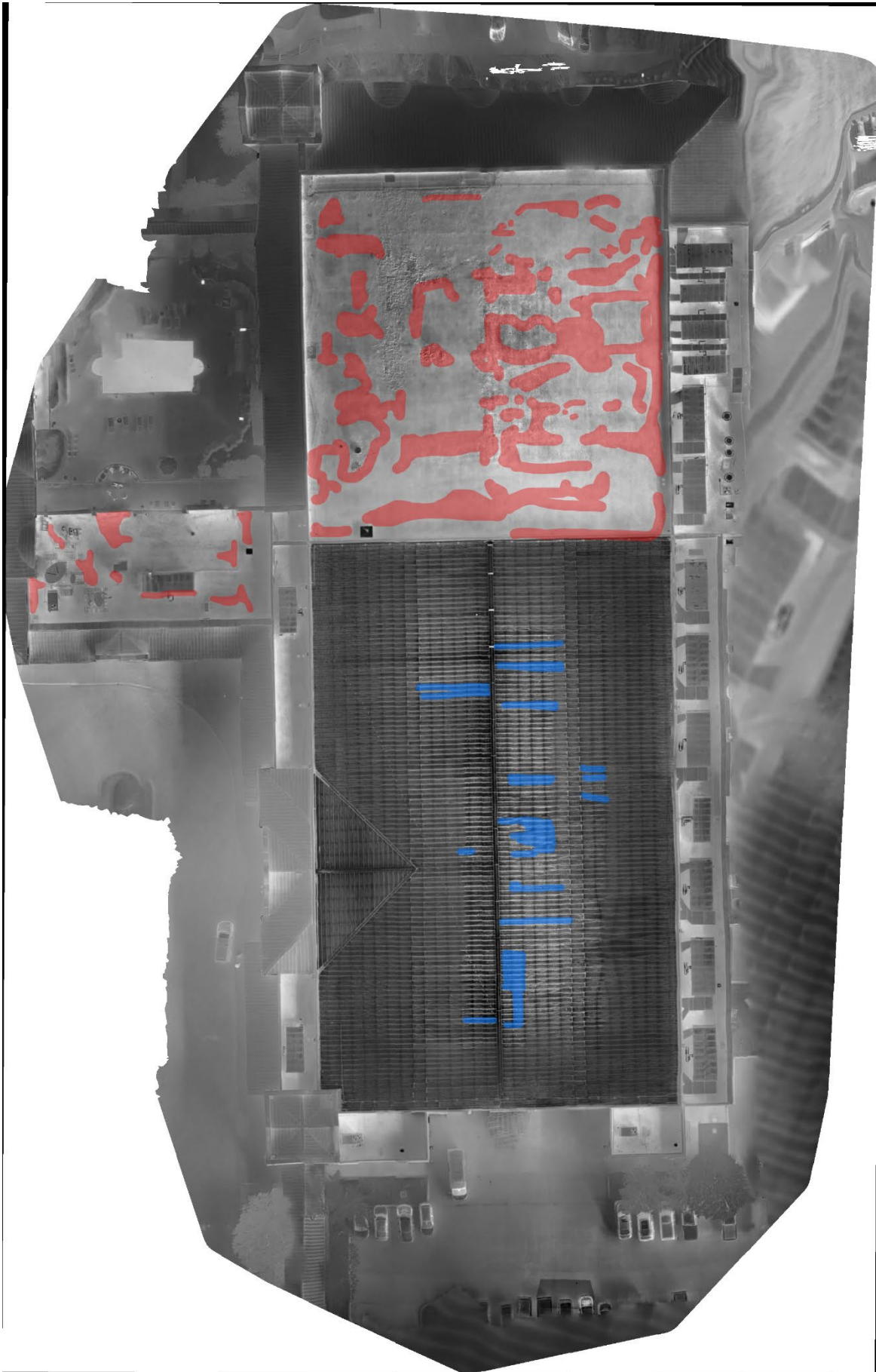


"EXCELLENCE IS OUR MISSION"

## Thermal and Visual Roofing Inspection

1700 Rodeo Dr, Mesquite, TX 75149

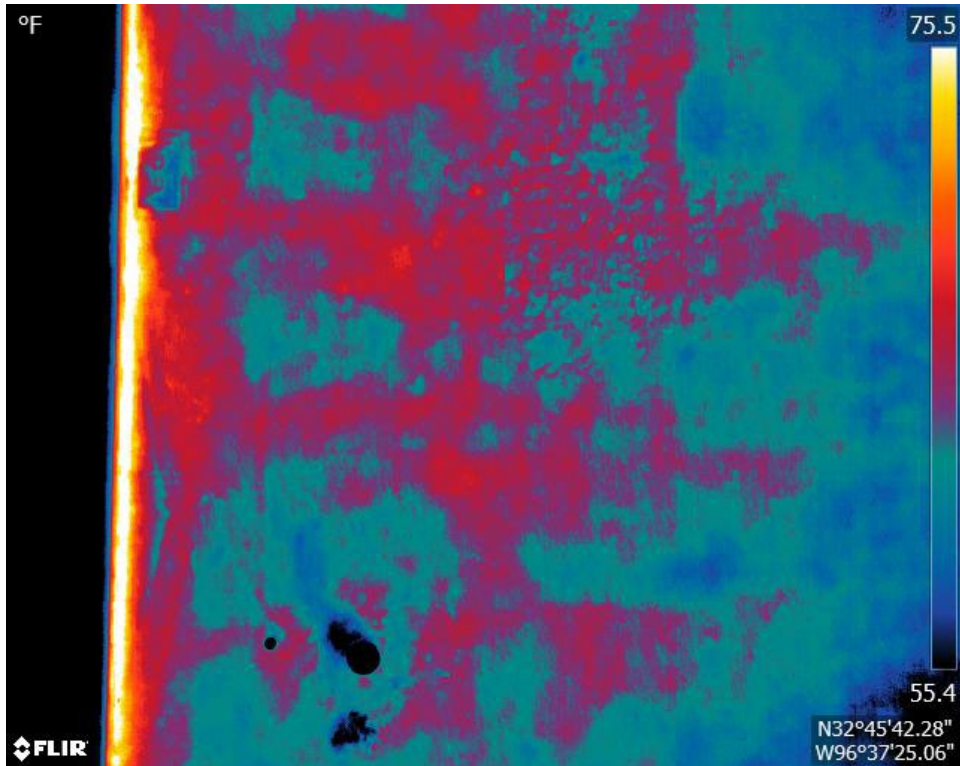




Moisture  
Very Likely

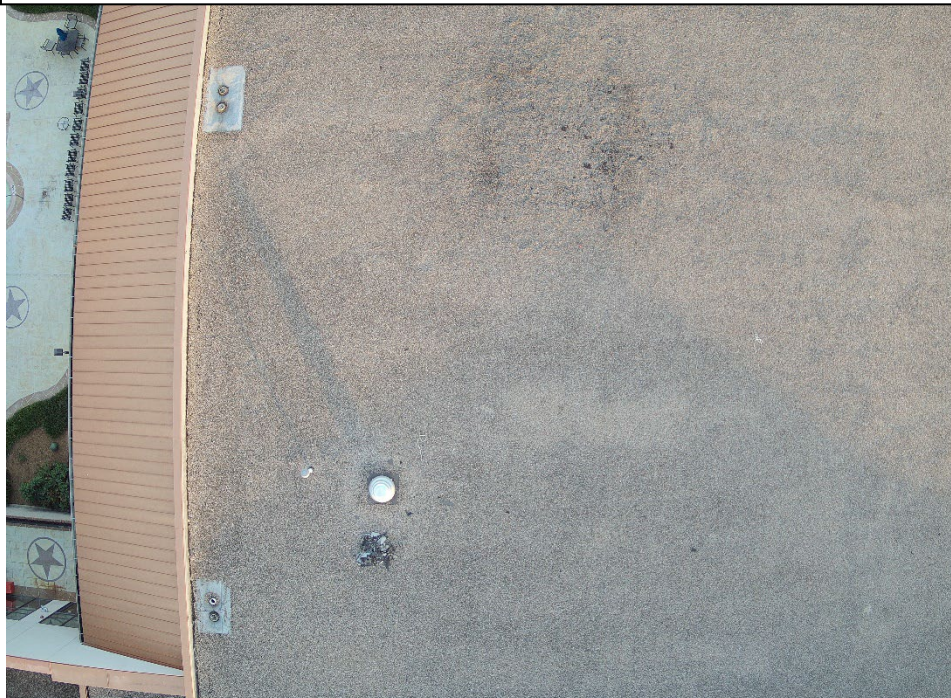


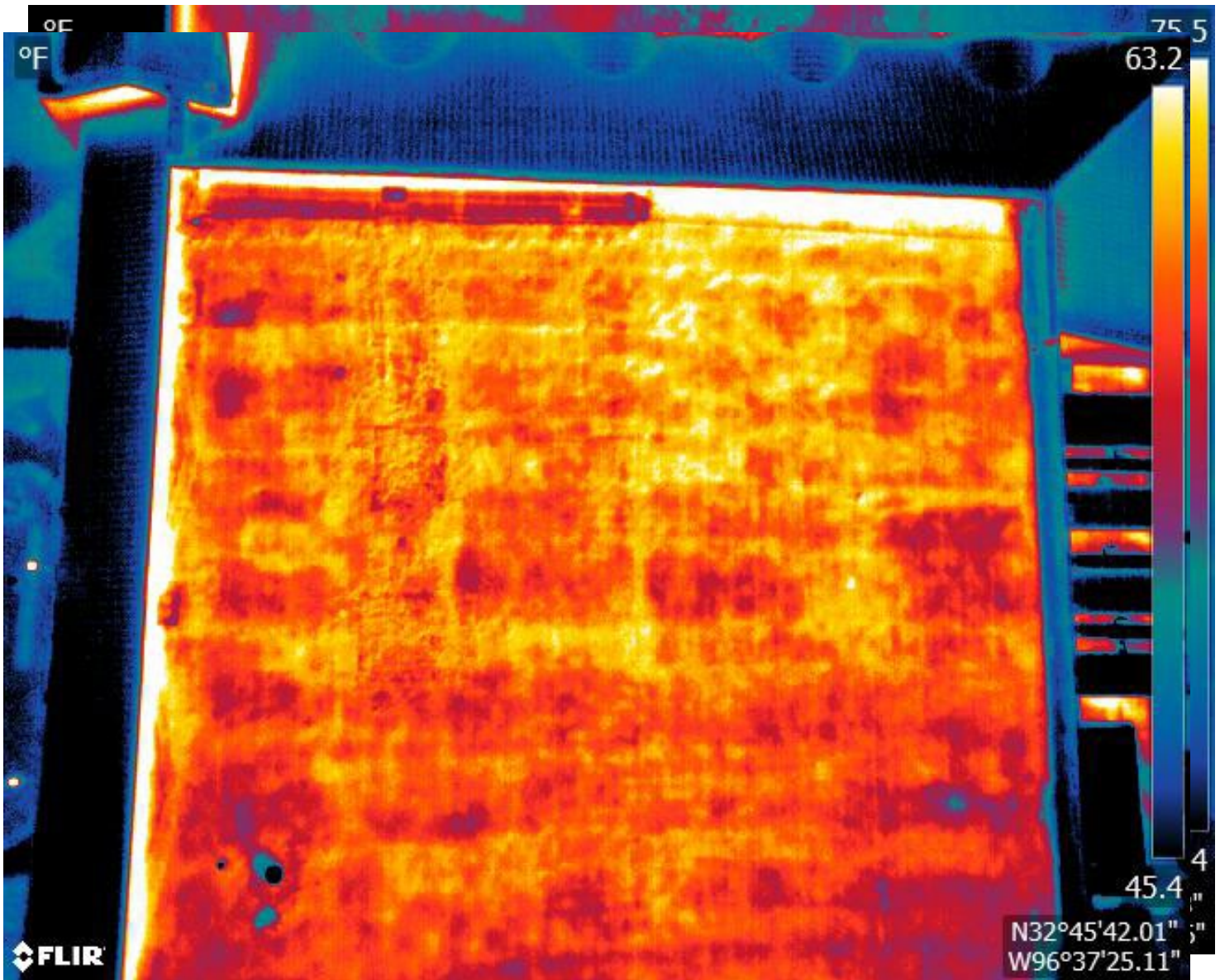
Moisture  
Likely



When producing thermal roofing reports it is important to capture RGB (visible) images of the same areas that the thermal is taken.

This allows inspectors to determine if the thermal delta is due to either physical properties or excess sun exposure. In the case of the Mesquite Convention Center, none of the areas highlighted showed reasons for thermal delta due to physical characteristics / light exposure.

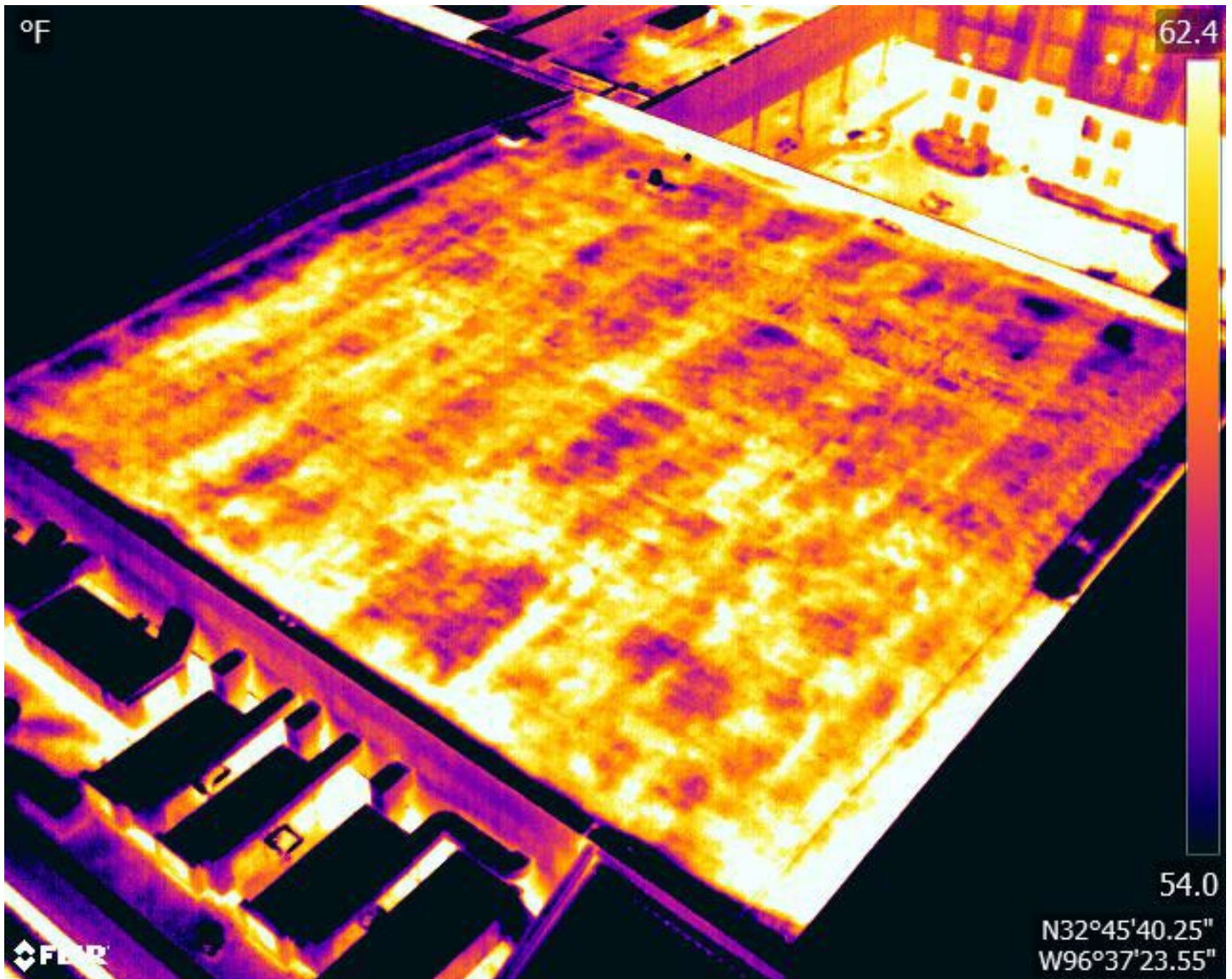




In the images taken, there are clearly areas that show more heat retention than the surrounding areas. In the case of the Mesquite Convention Center, it is less defined than in other inspections. This is most likely due to an overall moisture retention across the whole of the roof. This is NOT a normal condition and should be addressed before the underlying structure is compromised.

Areas that are brighter in this image represent warmer areas. This would be the areas that moisture has been retained.





An oblique view of the roof shows the potential presence of moisture across the whole roof. This image has had the contrast increased to better show the areas where thermal delta is present.



The overall roof of the Mesquite Convention Center appears to be in poor condition. In our professional and unbiased opinion, the roof is retaining abnormal amounts of moisture. This puts the metal structure under the roof in danger of sustaining damage through rust and rot.

We typically see more localized thermal delta which allows for better isolation for repairs rather than replacement. This roof, however, appears to be retaining enough moisture that it is difficult to isolate the areas that would need to be repaired. Often, a roof in this condition would need to be entirely resurfaced or recovered.

We are not a roofing company, nor do we bias our results to favor either party in a roof inspection. Instead, we collect, analyze, and present the data as a third party, unbiased in the outcome of the report. LS Drone has performed these types of roof inspections for hundreds of buildings and clients from insurance companies, roofing companies, and building owners. This report has been completed with the same lack of bias and should be interpreted as such.

We encourage all parties requiring additional information to contact LS Drone through the following means:

Tel. 817-642-7499

Email: [info@lsdrone.com](mailto:info@lsdrone.com)

Web: [www.LSDrone.com](http://www.LSDrone.com)

LS Drone appreciates the trust you have placed in us.

Drew Smith  
CEO, LS Drone  
817-642-7499 x101



## About Lone Star Drone

Lone Star Drone was founded in 2018 by an Army Veteran with one mission: Provide superior aerial solutions and services to commercial and enterprise markets. Since then, we have been changing the way drone services are done in all arenas of the market. From oil and gas to clean energy, commercial to private businesses, our goal is to make our client's project our mission.

We provide drone services all over the world. Not only are we revolutionizing the industry, we make it our goal to give back to our community through our charity work as well as by helping the clean energy market to function at peak efficiency. We are developing ways to keep workers and inspectors safe through our "zero hazardous work hours" approach. To learn more about who we are and what we do, visit our website or give us a call.

Principle Office  
2301 E Lamar BLVD, STE 160  
Arlington, TX 76006

[www.lsdrones.com](http://www.lsdrones.com)  
[info@lsdrone.com](mailto:info@lsdrone.com) Tel  
817.642.7499