

AN ORDINANCE OF THE CITY OF MESQUITE, TEXAS, PROVIDING THE ABANDONMENT OF A 15 FOOT UTILITY EASEMENT LOCATED AT THE INTERSECTION OF THE WEST RIGHT-OF-WAY LINE OF WILKINSON DRIVE AND THE NORTH RIGHT-OF-WAY LINE OF PAZA DRIVE, CITY OF MESQUITE, DALLAS COUNTY, TEXAS AS RECORDED IN VOLUME 3986, PAGE 481 DEED OF RECORDS OF DALLAS COUNTY, TEXAS; DECLARING AN EMERGENCY; AND PROVIDING AN EFFECTIVE DATE THEREOF.

WHEREAS, the City of Mesquite has heretofore obtained a utility easement that will not be needed in the future;

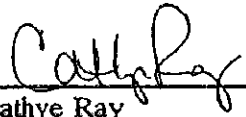
NOW, THEREFORE, BE IT ORDAINED BY THE CITY COUNCIL OF THE CITY OF MESQUITE, TEXAS:

SECTION 1. That a 15 foot utility easement located at the intersection of the west right-of-way line of Wilkinson Drive and the north right-of-way line of Paza Drive more particularly described in Exhibit "A" attached hereto and included herein for all purposes shall be, and the same is hereby abandoned.


SECTION 2. That said utility easement is not needed for public purposes and it is the public interest of the City of Mesquite to abandon said described easement and the same is hereby abandoned, vacated and closed insofar as the right, title or easement of the public is concerned.

SECTION 3. That the orderly development of the City of Mesquite requires the release and abandonment of the easement described herein creates an urgency and emergency in the public interest and necessitates that this ordinance become effective immediately from and after its date of passage and the publication of the caption as the law in such cases provides.

DULY PASSED AND APPROVED by the City Council of the City of Mesquite, Texas, on the 17th day of March, 1997.


Cathye Ray
Mayor

ATTEST:


Ellen Williams
City Secretary

APPROVED:

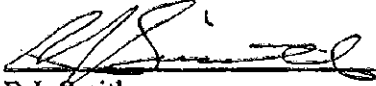

B.J. Smith
City Attorney

EXHIBIT "A"
EXISTING 15' UTILITY EASEMENT

BEING; a 20,214 square foot tract of land situated in the W. J. Lewis Survey, Abstract No. 814, in the City of Mesquite, Dallas County, Texas, a portion of said tract being part of a 15 foot Utility Easement granted to the City of Mesquite according to deed recorded in Volume 3986, Page 481, of the Deed Records of Dallas County, Texas (D.R.D.C.T.), and being more particularly described as follows:

COMMENCING; at a 1/2 inch iron rod with Half cap found for corner, said point being located at the intersection of the west right-of-way line of Wilkinson Drive (60 foot R.O.W. at this point), and the north right-of-way line of Paza Drive (60 foot R.O.W.);

THENCE; N 85° 01' 19" W, with the north line of Paza Drive, a distance of 478.26 feet to a point for corner, said point being located on a southeasterly line of the said 15 foot Utility Easement;

THENCE; N 50° 31' 50" E, leaving the north line of Paza Drive, and with the said southeasterly line, a distance of 14.28 feet to the POINT OF BEGINNING;

THENCE; the following courses and distances to points for corner;

N 85° 01' 19" W, a distance of 21.42 feet;

N 50° 31' 50" E, a distance of 369.35 feet;

and N 19° 03' 10" W, a distance of 266.86 feet;

THENCE; N 15° 51' 50" E, passing at 310.80 feet the south right-of-way line of Agnew Street, abandoned by the City of Mesquite according to Ordinance No. 3076, recorded in Volume 96040, Page 2582, D.R.D.C.T., in all, a distance of 320.73 feet to a point for corner;

THENCE; N 27° 19' 54" E, passing at 56.71 feet the north line of said Agnew Street, in all, a distance of 415.11 feet to a point for corner, said point being located on the aforementioned west line of Wilkinson Drive (variable width R.O.W. at this point);

THENCE; S 01° 28' 53" W, with the west line of Wilkinson Drive, a distance of 34.40 feet to a point for corner, said point being located N 01° 28' 53" E, a distance of 284.89 feet from a point of intersection on the west line of Wilkinson Drive;

THENCE; S 27° 19' 54" W, leaving the west line of Wilkinson Drive, passing at 319.73 feet the north line of said Agnew Street, in all, a distance of 382.64 feet to a point for corner;

THENCE; S 15° 51' 50" W, passing at 4.20 feet the south line of said Agnew Street, in all, a distance of 314.51 feet to a point for corner;

THENCE; S 19° 03' 10" E, a distance of 272.57 feet to a point for corner;

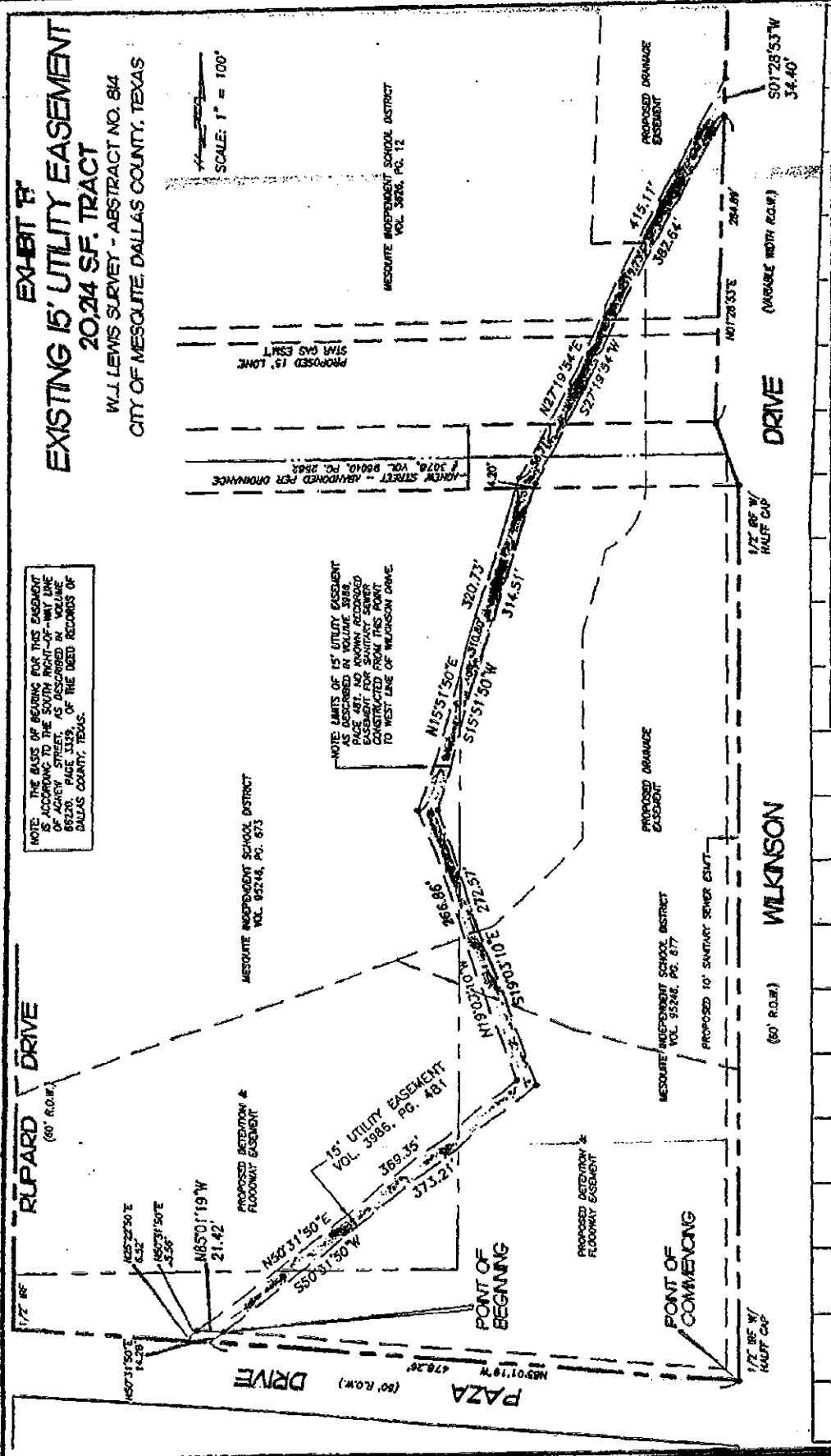
THENCE; S 50° 31' 50" W, a distance of 373.21 feet to the POINT OF BEGINNING, containing 20,214 square feet of land, more or less.

EXHIBIT F
EXISTING 15' UTILITY EASEMENT
20,214 SF. TRACT

W.J. LEWIS SURVEY - ABSTRACT NO. 814
 CITY OF MESQUITE, DALLAS COUNTY, TEXAS

SCALE: 1" = 100'

NOTE: THE BASIS OF BEARING FOR THIS EASEMENT IS ACCORDING TO THE SOUTH RIGHT-OF-WAY LINE OF ACHERY STREET, AS DESCRIBED IN VOLUME 3878, PAGE 128, OF THE DEED RECORDS OF DALLAS COUNTY, TEXAS.



NDM

NATHAN D. MAIER CONSULTING ENGINEERS, INC. 300
 Three Northpark / 8800 N. Central Expwy. / Suite 300
 Dallas, Texas 75231 / Ph. (214) 739-4741

12	13	14	15	16	17	18	19	20	21	22
MESQUITE PARK NO. 2										

00209